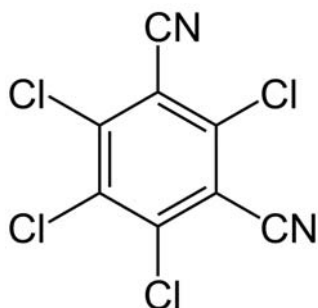


AntiBlu® Chlorothalonil

C₈Cl₄N₂
CAS No. 1897-45-6

Chlorothalonil (2,4,5,6-tetrachloro-1,3-benedicarbonitrile) is a common fungicide,



first registered in the U.S. in 1966 and frequently used to protect a wide range of agricultural crops from fungal disease. It is also used to prevent deterioration and discoloration caused by fungi and mildew in paints, other coatings, and treated wood. Chlorothalonil has proven itself as a long-term mold preventative on building products.

It is of low toxicity to non-target terrestrial organisms, and is rapidly degraded by microorganisms in soil. It can be highly toxic to some aquatic organisms, but only at concentrations greatly exceeding normal exposure levels in surface waters. IARC classifies it as possibly carcinogenic to humans (Category 2B); tests by various agencies have concluded that occupational exposure to chlorothalonil has little, if any, carcinogenic potential in humans. Chlorothalonil is considered non-toxic to mammals, birds, bees, and earthworms.

AntiBlu® Chlorothalonil is part of the AntiBlu family of wood protection products available from Arch Wood Protection, Inc., a wholly owned subsidiary of Arch Chemicals, Inc.

Application

Paints / stains

Use 10-25 lbs. (1-2.5 gallons) per 100 gallons of water-based stain to prevent growth of mold, mildew, and wood decay fungi.

Freshly sawn wood

Use 5-10 lbs. (0.5–1 gallon) per 100 gallons to inhibit growth of sapstain and mold fungi. Use the higher rate under adverse conditions or when the wood is expected to remain wet for prolonged periods. Treat freshly sawn wood products thoroughly to ensure coverage of all exposed wood surfaces.

For best results, green wood should be treated within 24 hours of cutting or sawing. Mold and fungus growth begins immediately after cutting, so delayed treatment is much less effective and requires increased chemical concentrations. Green, untreated lumber should not be used for stickers.

Seasoned wood

Use 10-25 lbs. (1-2.5 gallons) per 100 gallons of water, water repellent, or latex coating to control mildew and mold.

Pressure-treated wood

In treating solution: Use 0.2-0.4 gallons per 100 gallons of treating solution.

Physical Properties

Physical state	Liquid
Appearance	Light gray
Odor	Slightly pungent
Boiling point	212°F / 100°C
pH	8.0
Specific gravity	1.24
Bulk density	10.3 lbs./gal. @ 20°C



Safe Use & Handling

See the MSDS for details.

Storage

Keep container tightly closed and away from feed and food. Store in a cool area with good ventilation, but protect from frost. If frozen, allow to thaw and stir well before using.

Container Disposal

Do not distribute, make available, or reuse empty containers except for storage and shipment of original product. Remove product residue from container using appropriate solvents and methods (e.g., triple rinsing). Then offer container for recycling/reconditioning, or puncture or otherwise destroy empty container and dispose of in facility permitted for nonhazardous waste.

FREQUENTLY ASKED QUESTIONS

1. How does this product differ from other mold inhibitors?

Chlorothalonil is an effective and economical fungicide, particularly useful as a mold preventative, which has been used around the world in a variety of applications. Its concentrate is an aqueous suspension; agitation is recommended in both totes of concentrate and in work tanks. There is no loss of efficacy as mold spores increase in the solution.

2. Is it better than what I currently use?

This product is a practical option to typical mold control programs. Chlorothalonil prevents growth of multiple species of mold, and by nature remains very stable both in solution and on lumber.

3. Is there anything different I need to do when adding the product to the work solution?

The concentrate should be agitated before pumping/metering into work tank. Agitation is helpful in the work tank as well.

4. Will the treating solution look different?

Chlorothalonil will most likely make the treating solution look somewhat milky, but otherwise the appearance should be similar.

5. Will my lumber look different?

Top boards in a bundle may sometimes show a white, powdery substance similar to sand. This is normal and a good indication that there is sufficient coverage.

6. Is efficacy affected by pH range?

Chlorothalonil is stable from a pH of 1 to around 10. Above 10 there may be a breakdown of the delivery system with chlorothalonil dropping out.

7. Is chlorothalonil environmentally safe?

It is one of the world's most respected contact fungicides. It has low toxicity to non-target terrestrial organisms, and is highly immobile in soils. It is non-toxic to bees, earthworms, and birds. In sufficient concentrations, chlorothalonil can be highly toxic to aquatic organisms, but wood treated with this additive presents little risk to aquatic life in natural ecosystems.

8. Are safety precautions necessary?

As with nearly all substances, care should be taken in handling the product. See the MSDS for specific safety recommendations. Use appropriate PPE.

9. How does it work?

Chlorothalonil reacts with substances within fungal cells, making them unable to obtain the energy needed for growth and reproduction.

10. Does it add to the corrosivity of the treated wood?

No.

11. Does it make treated wood more difficult to paint or stain?

No.

12. Will the treatment remove mold from wood?

No. Infestation prior to treatment will be stopped with this treatment but the discoloration caused by mold will remain visible.