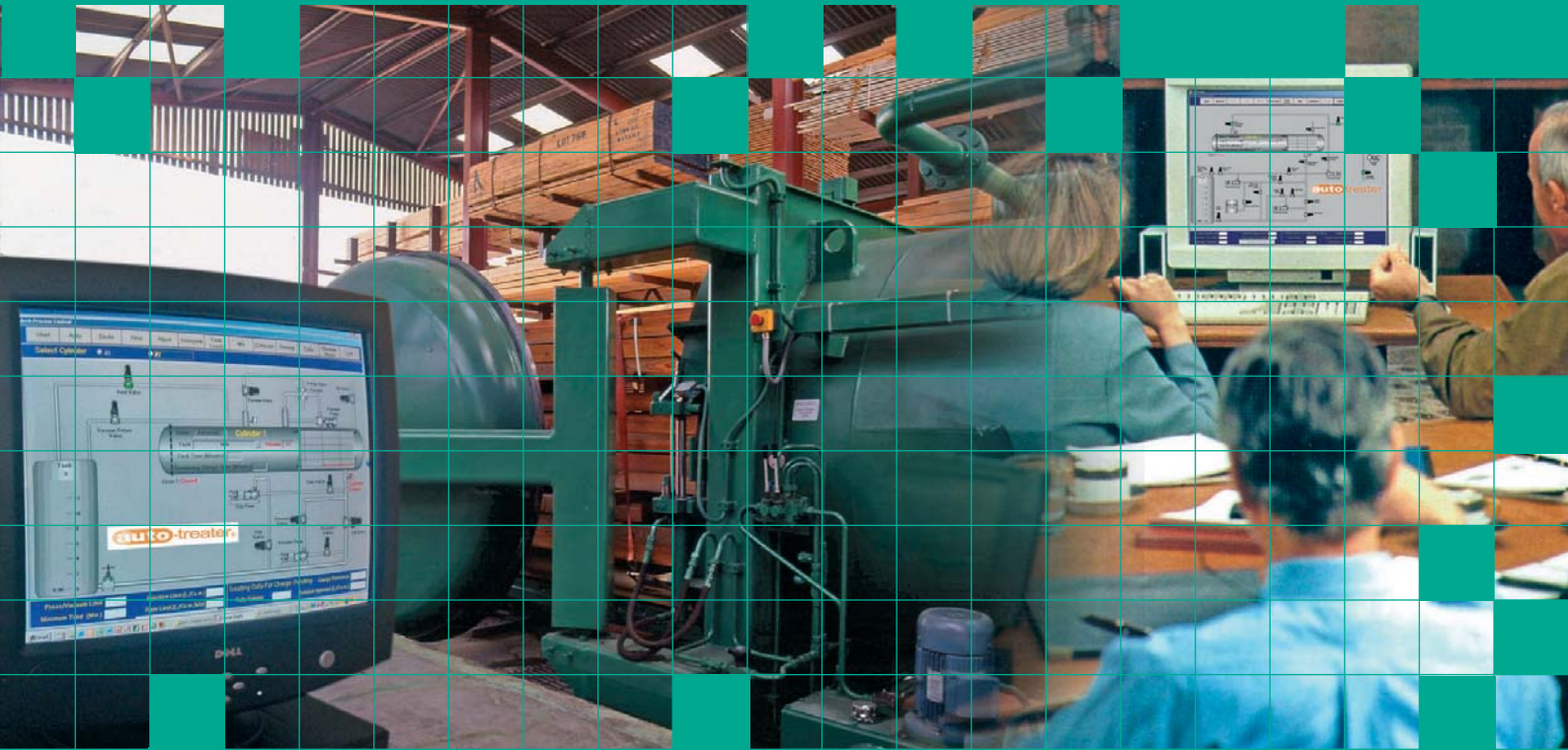


DOES YOUR TREATMENT PLANT HAVE TALENT?

It will have with

autotreater®

An unprecedented software system that combines automation and business management to give you total control and optimisation of your timber treatment business



- Improves your **process efficiency**, maximising throughputs and minimising costs

- Provides up to the minute information on your **stock inventory**

- Gives you access to valuable **management reports** allowing you to analyse your business based on a whole range of parameters

- Possible to **integrate** with your existing order processing software

- Potential to **link multiple treatment plants** whatever type, making all your plant information accessible from one place

- **Self diagnostic** system for ease of maintenance

- **Sophisticated** yet impressively **simple** for your staff to use

- Option for automated solution mixing and analysis significantly **reduces the risk** of operator exposure to preservatives offering you the ultimate in best available technique (BAT) under COSHH

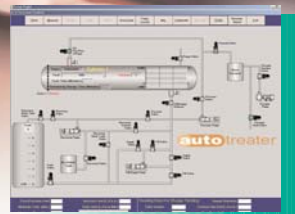
All this at your fingertips with

autotreater®



Arch
Timber
Protection

001... operational data automatic generation



Auto-Treater® has been designed by Arch Timber Protection with your treatment business in mind, to help you improve efficiency whilst minimising costs. Offering a range of benefits unmatched in the industry, Auto-Treater® provides reliable and accurate process control together with an intuitive management reporting function and all in an easy to learn and easy to use format.

"It's freed up nearly 50% of the plant operators time"

"From one central console, the operator has complete control over all three of our pressure vessels"

"I've never used a computer before and I did have some apprehension before Auto-treater was installed. However, I found it very easy to master."

"The system enables us to accurately monitor stocks of raw materials – another benefit in terms of efficiency."

"I believe it is the way of the future for controlling and managing treatment plant."

System overview

- Full on screen graphic display detailing real time treatment process and mixing operations
- Ability to control more than one treatment plant from a single console
- Solution strength and preservative make up calculators
- Pre-programmed customised treatment cycles based on precise preservative requirements
- Instant and accurate calculation of process results
- Automated mixing and filling reducing the risk of potential operator exposure to preservative
- Simplified data input for charges, reducing administration time
- Professional, instantly producible treatment certificates for customers
- Electronically stored process information saving on paper and storage space
- Substantial database facility that produces reports relevant to the sales team (customers, volumes, timber dimensions, order sizes), accounts and purchasing (product usage, costs per cubic metre) and business managers (monthly reports, summaries, historical trends)

- Search facility for traceability
- Stock inventory immediately available
- Fault identification and alarm system to aid rapid resolution of any plant issues
- Option to have a built-in modem link for more immediate Arch assistance
- Upgrades available on an ongoing basis

Several Auto-Treater® options are available including with or without the facility to carry out automated mixing and with a plc only based control system

Product training

Whether Auto-Treater® is installed on existing or new timber treatment plant, full training will be provided by Arch Timber Protection in addition to continuous ongoing support. A detailed manual will accompany the training.

autotreater® For treatment plants with aptitude



Arch Timber Protection

... helping to make the most of timber.