



**PRESSURE TREATED TIMBER  
WITH BUILT-IN WATER REPELLENT**



Tanalised® Extra pressure treated timber is timber which has been impregnated with Tanalith® E wood preservative containing Tanalith® Extra water repellent under rigidly controlled conditions in a vacuum pressure timber impregnation plant.

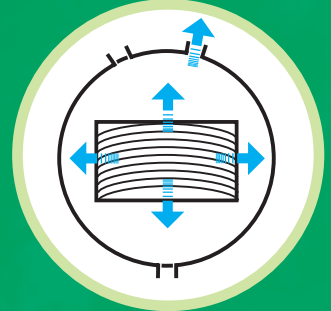


... **ideal** for playground, decking and cladding applications.

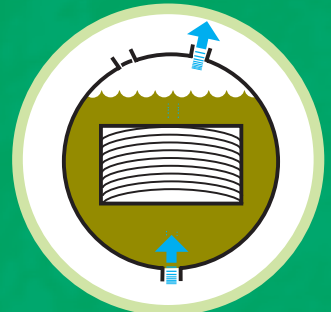
**Suitable for Use/Hazard Classes 3 and 4**

# Treatment Process

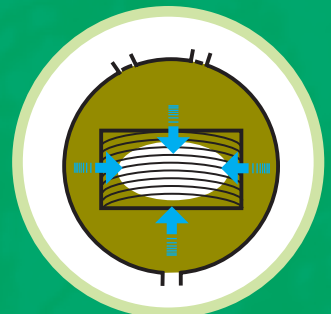
**1** Timber loaded into treatment vessel. Initial vacuum applied and the timber cells are evacuated of air. Vacuum held.



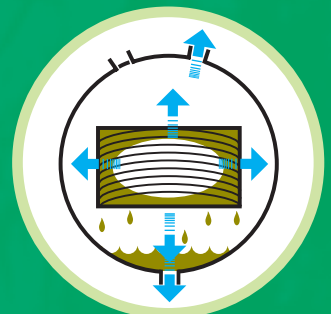
**2** Cylinder flooded under vacuum with TANALITH® E wood preservative containing TANALITH® Extra water repellent.



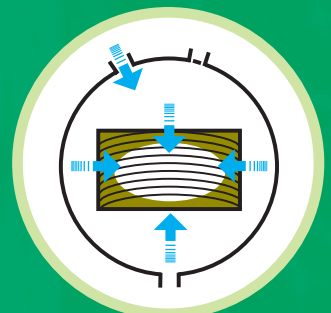
**3** Hydraulic pressure applied, forcing the preservative deep into the structure of the timber.



**4** Final vacuum extracts excess preservative solution, which is pumped back to storage.



**5** Low pressure inside timber draws in surface solution when vented to atmosphere. Treated timber is left to dry.



Please note: Preservative penetration will depend upon timber species, end use classification and in some cases heartwood/sapwood ratios.